

7.1 Example of Product

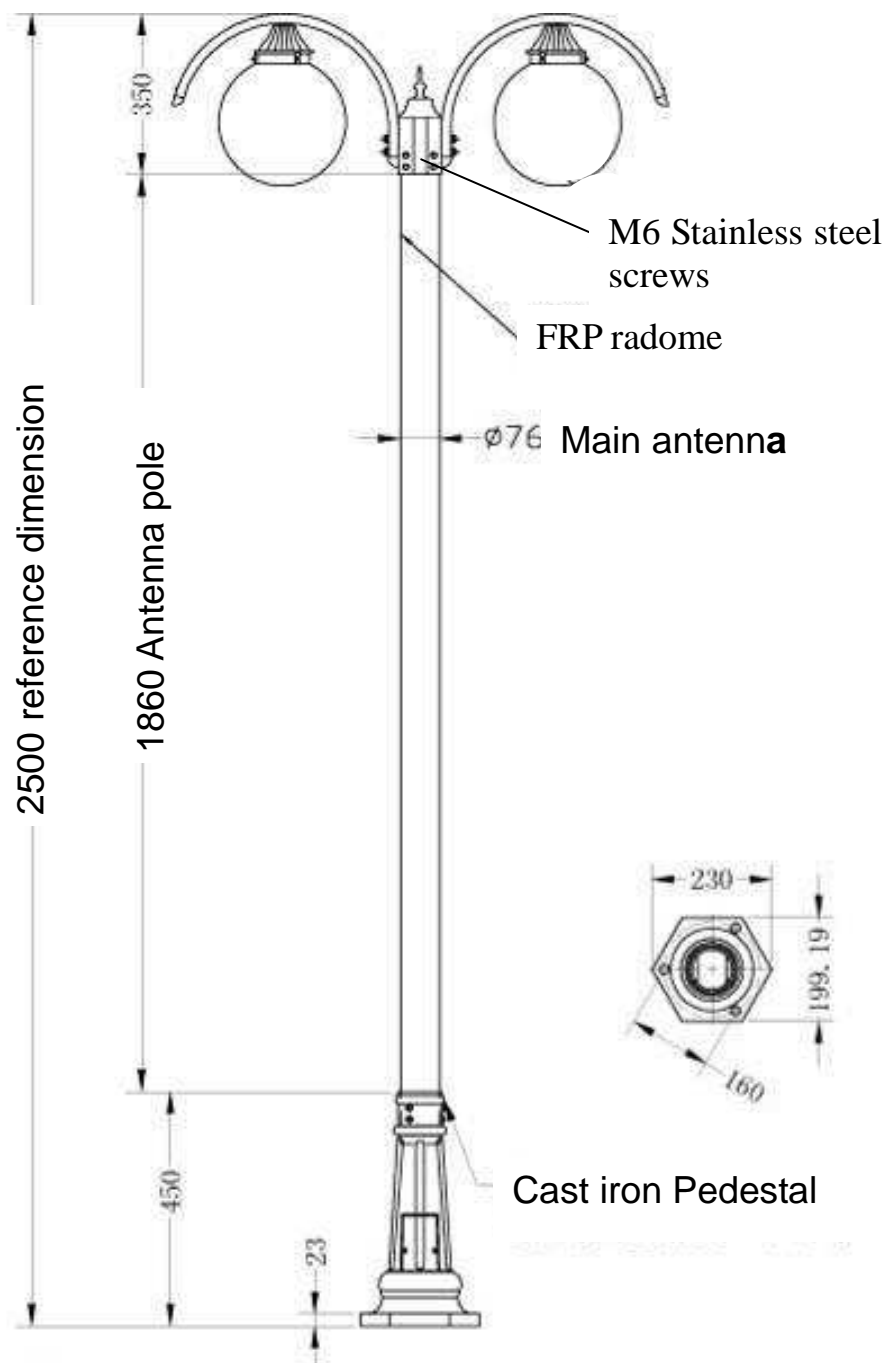


Model: 360101-0LD-0058

7.2 Dimensions and Configurations

Radome Material	Fiberglass ϕ 76*1900mm
Standard color	Black polished
Lighting	Light can be on
Configuration	lamp cap: LD-0001 Dimensions of antenna pole: ϕ 76*1900mm With small hexagonal screw and stone bolt
Elevation angle	10° ~20°
Connector Type	With cable
Dimensions	Total height: 2500mm. The detailed size is as follow:

7.3 Dimensions of diagram



Note:

- 1 The marked dimensions are just for your reference and are subject to the actual one without notice.
- 2 The color of streetlight is black polished ;(color outdoor is baking varnish)

7.4 Installation Steps

Procedure of Installation

- ① M12 Stone bolt, nut and flat washer
- ② Antenna
- ③ Cement floor

Installation Steps:

- A. Aim at the installing hole of the pedestal to the four stone bolts on the cement floor.
- B. Fasten the pedestal on the cement floor with flat washer and nut.
- C. Connect the upper end of the yellow grounding wire to the metal part of the lampshade, and the lower end of the yellow grounding wire to the ground.

