

FR105B Control Box

Description

FR105B Synchronizing control box employs MCU control technology. With pre-programmed software. Max. control of 4 aviation obstruction lights: one light working, the other on standby. Electrical fault detection triggers automatic light switching. This product features reliable performance, easy maintenance and operation.



Main functions and features

- Switch on / off several lights synchronously
- One light fault, the standby light will turn on automatically
- Indicator or fault alarm alerts of light failure, photocell failure, power failure.
- Alarm signal output, can connect to other external alarm devices (optional)
- With a manual photocell switch—can switch ON/OFF the light when the photocell is not available
- With external photocell
- Outdoor use

Specifications

- Operation voltage: DC48V
- On/off level: 70-100 lux (optional)
- Flashing: 20-60 times/min (optional)
- Ambient temperature: -30℃ - +60℃
- Dimension: 300x200x135

Wiring

- Please connect the power cord according to the following diagram



“Power” – input voltage

1M、1S、2M、2S – connect to aviation obstruction light separately

1M = working light 1

1S = standby light 1

2M = working light 2

2S = standby light 2



Lamp1 Alarm、Lamp2 Alarm、Lamp3 Alarm、Lamp4 Alarm –alarm terminal

Photocell – photocell terminal



NO:1、NO:2、NO:3、NO:4 are 4 aviation obstruction lights indicator separately.

Green light means working. Red light AL1、AL2、AL3、AL4 means corresponding light failed.

The power alarm terminal will output alarm signal when power cut.

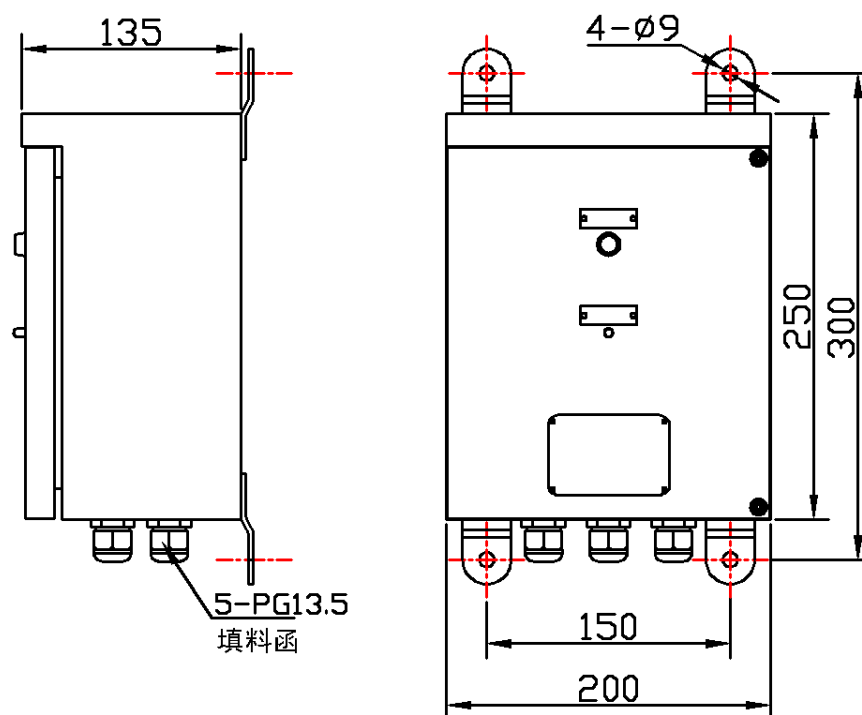
When “M light (1M or 2M)” is working, “S light (1S or 2S)” will be on standby, no output alarm signal. Corresponding display: NO:1 light on, NO:2 light off, AL1、AL2 all light off.

When “M light” fault, “S light” will turn on automatically and output “M light” fault alarm signal. Corresponding display: NO:1 light off, NO:2 light on, AL1 light on, AL2 light off.

When “M and S light” all not working will output “M and S light” fault alarm signal. Corresponding display: NO:1 、NO:2 all light off, AL1、AL2 all light on.

- Verify wiring before power on.

Dimension



FR-105

Set up:

The control box original is Auto working with a default flashing frequency 40 times/min.

Open here
including a black button and a red DIP switch



1. Steady burning and flashing

Select red DIP switch until the corresponding light, dial to number side means flashing, or else meaning steady burning, please press black button to save after setting.

2. Flashing frequency

Please make sure the DIP switch on flashing mode, push black button, green LED indicator will light accordingly, release it until corresponding indicator light up reaching your demand.

N0.4 turn on:	20 times/min
N0.4, N0.3 turn on:	30 times/min
N0.4, N0.3, N0.2 turn on:	50 times /min
N0.4, N0.3, N0.2, N0.1 turn on:	60 times /min
AL turn on	30 times /min

3. Auto switch to Manual

Push black button until "AUTO" light off means turn into Manual state.

4. Manual switch to Auto

Push black button until "AUTO" light on means turn into Auto state.

In Auto state, the light control by photo sensor, if not connecting, the light will keeping on working state.



Notice:

- Check whether the power cables are well connected before power is on
- Do not open any components of this product when in operation.

Note: Please use the product strictly on accordance with the instruction above.