

### 3.1 Example of Product

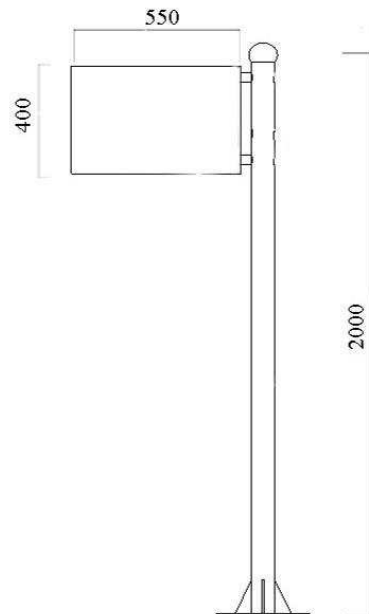


Model: 360104-GGP-0006

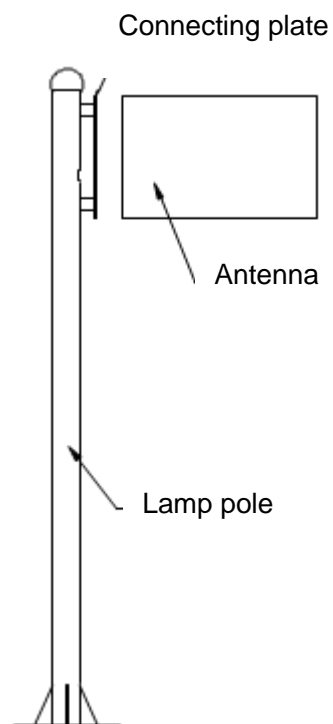
### 3.2 Dimension and Configuration

Radome Material	Fiberglass
Color	White
Print Design	Customized
Configurations	Billboard and expansion bolt
Connector Type	With cable
Dimensions	The detailed dimensions is as follow:

### 3.3 Dimensions of diagram



### 3.4 Installation Steps



#### Procedure of Installation

- 1 Connect the antenna to the stand (the stand is inside the radome)
- 2 Connect the stand to the connecting plate and fasten with the screw.
- 3 Cover the radome and fasten with the screw.
4. Fix the lamp pole on the ground with the stone bolt.