

## 7.1 Example of Product

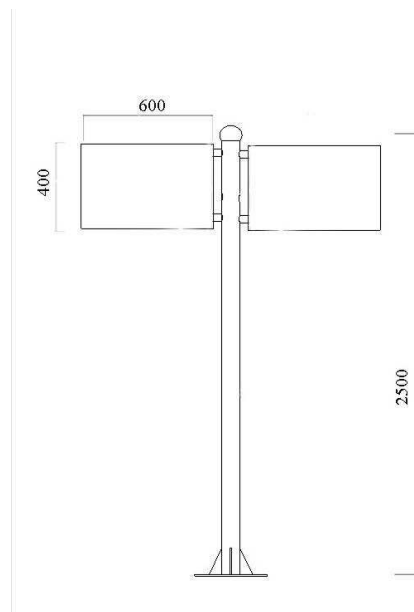


Model: 360103-GGP-0006

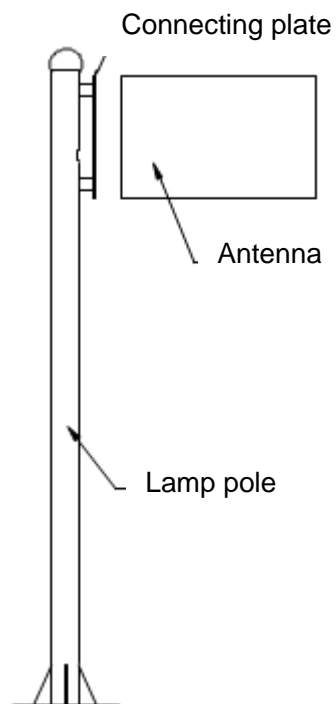
## 7.2 Dimension and Configuration

Radome Material	Fiberglass
Color	Black(body of rod)
Location of Antenna	Inside the rod
Print Design	Customized
Configurations	Billboard and expansion bolt
Elevation angle	10°~20°
Connector Type	With cable
Dimensions	The detailed dimensions is as follow:

### 7.3 Dimensions of diagram



### 7.4 Installation Steps



#### Procedure of Installation

- 1 Connect the antenna to the stand (the stand is inside the radome)
- 2 Connect the stand to the connecting plate and fasten with the screw.
- 3 Cover the radome and fasten with the screw.
4. Fix the lamp pole on the ground with the stone bolt.